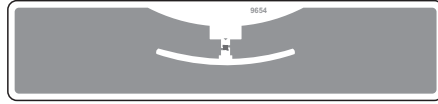
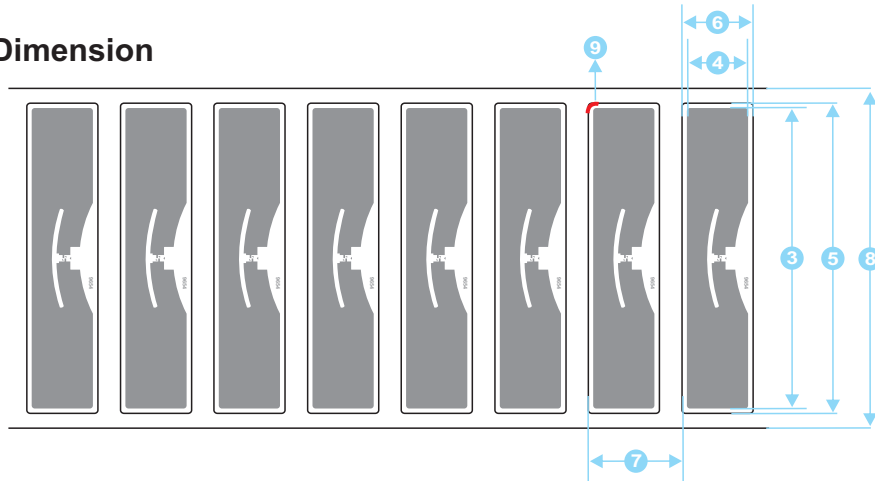


1. Physical Feature

1.1 Picture

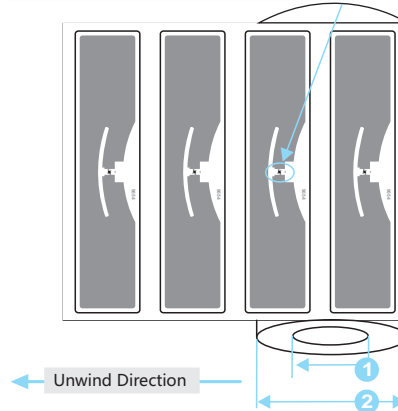


1.2 Dimension



NO.	Item	Dimension mm
1	Core ID	3inch (76.2±0.5)
2	Roll OD	≤200
3	Antenna Length	93±0.5
4	Antenna Width	19±0.5
5	Label Length	96±0.5
6	Label Width	22±0.5
7	Label Pitch	28.928±0.5
8	Release Paper Width	105±1
9	Chamfer	R=2

Chip is located between antenna and paper



2. Electrical Specification

Item	Description	Remark
IC	Impinj/Monza4E	
Substrate	PET	
Antenna Process	Aluminum ETCH (AL 9um)	
Protocols Supported	ISO/IEC 18000-6C EPC Class1 Gen2	
EPC	496 Bits	Read/write
TID	96 Bits	Read only
Password	32 Bits Access Password 32 Bits Kill Password	Read/write
User Memory	128 Bits	Read/write
Operating Frequency	860~960MHz	
Operating Mode	Passive	
Write cycles	100,000	
ESD_HBM/CDM	2000V	HBM

3. Operating Warning

3.1

Inlays with black ink dot are for bad products, do not use. Position is shown on the right.

3.2

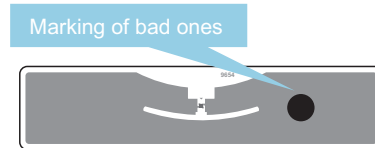
When carrying and applying inlays, keep away from water, violent bump and squeezing.

3.3

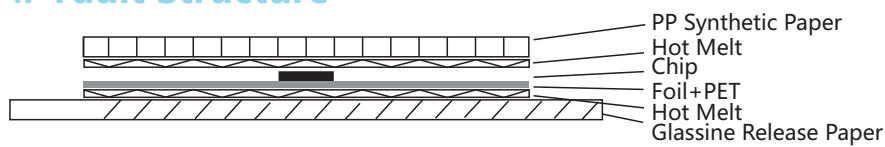
Operating Limits : -40~70°C / 20%~90% RH.

Storage Limits : -20 ~ 50°C / 20% ~ 90% RH(Without condensation).

The recommended storage temperature : 20 ~ 30°C / 50% RH .



4. Fault Structure



5. Package

Inlay Format in roll

Delivery Format 2500±100pcs/roll , 4 rolls/carton

Package Format 1, Waterproof, anti-collision, antistatic

2, In antistatic bags